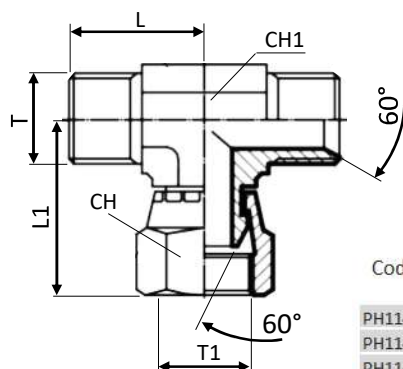
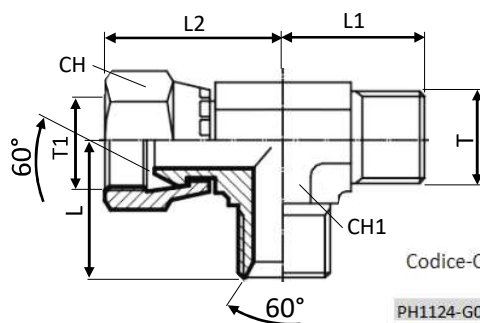


PH1144 CONNETTORE A "T" IN ACCIAIO ZINCATO FILETTO MASCHIO BSPP CON BASE ORIENTABILE FEMMINA
GALVANIZED STEEL MALE TEE BSPP THREAD WITH FEMALE SWIVEL BASE



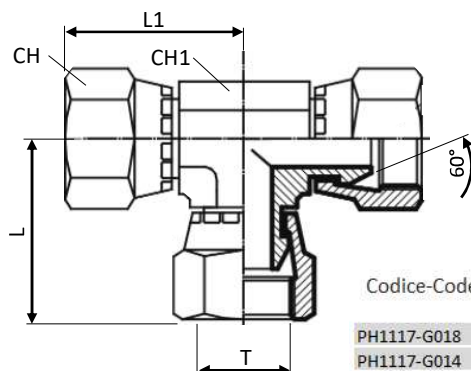
Codice-Code	CH	CH1	H	L	L1	ØT	ØT1	max Bar	
PH1144-G018	14	11	25	21	-	G1/8"	G1/8"	250	5
PH1144-G014	19	14	33	26	-	G1/4"	G1/4"	250	5
PH1144-G038	22	19	37	29	-	G3/8"	G3/8"	250	5
PH1144-G012	27	22	43	34	-	G1/2"	G1/2"	200	2
PH1144-G034	32	27	53,5	41	-	G3/4"	G3/4"	160	1
PH1144-G100	41	33	60,5	45	-	G1"	G1"	140	1
PH1144-G114	50	41	72,5	52	-	G1"1/4	G1"1/4	120	1
PH1144-G112	55	48	91	59	-	G1"1/2	G1"1/2	120	1

PH1124 CONNETTORE A "T" IN ACCIAIO ZINCATO FILETTO MASCHIO CON LATO FEMMINA GIREVOLE BSPP
GALVANIZED STEEL MALE TEE BSPP THREAD AND ONE SIDE WITH SWIVEL FEMALE THREAD



Codice-Code	CH	CH1	L	L1	L2	ØT	ØT1	max Bar	
PH1124-G018	14	11	21	20	26	G1/8"	G1/8"	250	5
PH1124-G014	19	14	26	27	32	G1/4"	G1/4"	250	5
PH1124-G038	22	19	29	30	36	G3/8"	G3/8"	250	5
PH1124-G012	27	22	34	37	40	G1/2"	G1/2"	200	2
PH1124-G034	32	27	41	40	54,5	G3/4"	G3/4"	160	2
PH1124-G100	41	33	45	50	55,5	G1"	G1"	140	1
PH1124-G114	50	41	57	52	59	G1"1/4	G1"1/4	120	1
PH1124-G112	55	48	49	59	72,5	G1"1/2	G1"1/2	120	1

PH1117 CONNETTORE A "T" IN ACCIAIO ZINCATO FILETTO FEMMINA GIREVOLE BSPP
GALVANIZED STEEL FEMALE TEE BSPP SWIVEL THREAD



Codice-Code	CH	CH1	L	L1	L2	ØT	ØT1	max Bar	
PH1117-G018	14	11	25	25	-	G1/8"	-	250	5
PH1117-G014	19	14	29	29	-	G1/4"	-	250	5
PH1117-G038	22	19	34	34	-	G3/8"	-	250	5
PH1117-G012	27	22	40	40	-	G1/2"	-	200	2
PH1117-G034	32	27	42,5	45,5	-	G3/4"	-	160	2
PH1117-G100	41	33	52	52	-	G1"	-	140	1
PH1117-G114	50	41	75,5	64	-	G1"1/4	-	120	1
PH1117-G112	55	48	91	75,6	-	G1"1/2	-	120	1